

# PROCESS WATER CHILLERS

**PRODUCTS COLLECTION**  
2019 EDITION

[www.eurochiller.com](http://www.eurochiller.com)

 **EURO  
CHILLER**<sup>®</sup>  
INTERNATIONAL COOLING

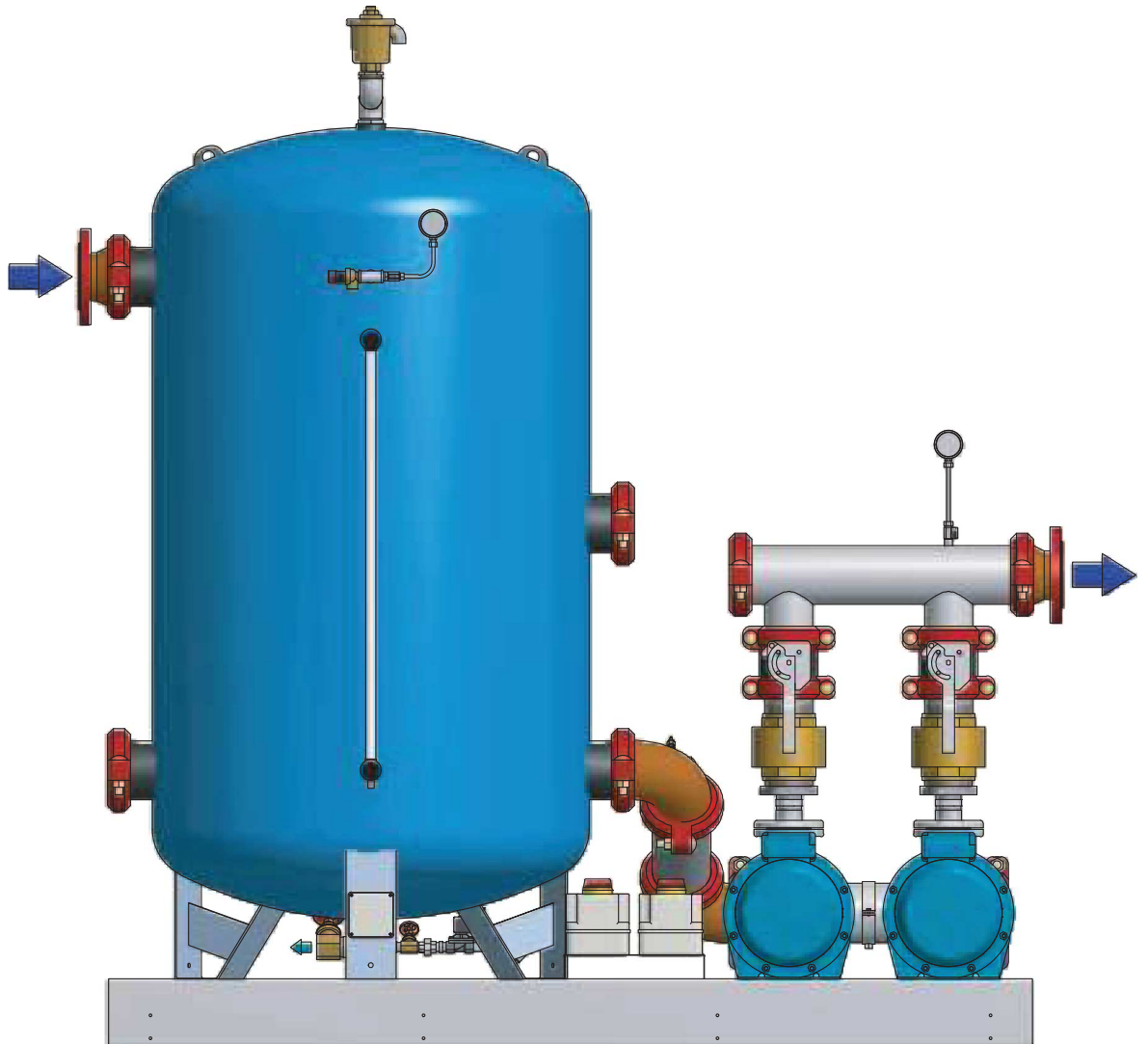




500 - 5000 lt



6 - 200 m<sup>3</sup>/h



**GRP**  
1 or more pumps

Flow rate 6/200 m<sup>3</sup>/h  
Pressure 2,5/5,5 Bar

**GRP-1P+S**  
1 Pump + Tank

Flow rate 6/200 m<sup>3</sup>/h  
Pressure 2,5/5,5 Bar  
Tank capacity 500/5.000 lt

**GRP-2P+S**  
2 Pump + Tank

Flow rate 6/200 m<sup>3</sup>/h  
Pressure 2,5/5,5 Bar  
Tank capacity 500/5.000 lt

<b>IT</b>	<b>BASAMENTO</b>	In acciaio zincato, verniciato con polvere epossipoliestere
	<b>POMPE</b>	Centrifughe in acciaio inox
	<b>SERBATOIO</b>	In acciaio al carbonio, rivestito internamente con resina termoindurente, verniciato esternamente, coibentato con elastomero a cellule chiuse (spessore 20 mm) rivestito in PVC completo di: rubinetto di carico/scarico, raccordo scarico aria, indicatore di livello
	<b>CONTROLLO</b>	Scatola di derivazione elettrica

<b>EN</b>	<b>BASE</b>	Galvanized steel painted with epoxy-polyester powder
	<b>PUMPS</b>	Stainless steel centrifugal pumps
	<b>TANK</b>	Made of carbon steel, internally coated with thermosetting resin, painted on the outside, insulated with closed cell elastomer (20 mm thick), PVC coated, complete with: filling/draining valves, air relief duct, level control
	<b>CONTROL</b>	Electrical junction box

<b>DE</b>	<b>STRUKTUR</b>	Verzinkte Stahlstruktur mit Epoxydharzlack beschichtet
	<b>PUMPEN</b>	Kreiselpumpen aus Edelstahl
	<b>TANK</b>	Hergestellt aus Kohlenstoffstahl, innen mit wärmehärtendem Harz beschichtet, außen lackiert, isoliert mit geschlossenzelligem Elastomer (20 mm dick), beschichtet mit PVC Komplett mit: Füll- Entleerungshahn, Luftauslassanschluss, Füllstandsanzeige
	<b>KONTROLLE</b>	elektrischer Anschlusskasten

<b>FR</b>	<b>STRUCTURE</b>	En acier zingué galvanisé peinte en poudre époxy/polyester
	<b>POMPES</b>	De type centrifuge, en acier inox
	<b>RÉSERVOIR</b>	En acier au carbone, revêtu intérieurement de résine thermodurcissable, peint à l'extérieur, isolé avec un élastomère à cellules fermées (20 mm d'épaisseur) revêtu de PVC et comprenant: robinet de remplissage / vidange, raccord d'évacuation d'air, indicateur de niveau
	<b>CONTRÔLE</b>	Boîte de jonction électrique

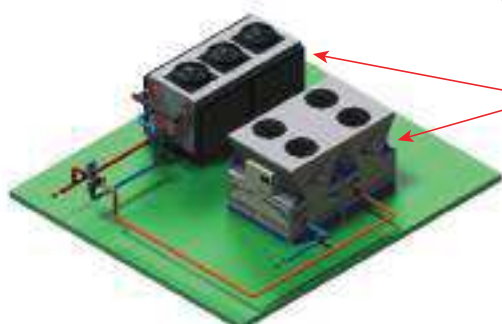
<b>ES</b>	<b>ESTRUCTURA</b>	De acero galvanizado, pintado en polvo epoxi-poliéster
	<b>BOMBAS</b>	De tipo centrifugo, de acero inoxidable
	<b>TANQUE</b>	De acero al carbono, cubierto internamente con resina termoendurecible, pintado externamente, aislado con elastómero de celdas cerradas (espesor 20 mm) cubierto de PVC completo de rellenado automatico, válvula de alivio, válvula rompe vacío, válvula de seguridad, interruptor/indicador de nivel, posible rellenado manual
	<b>CONTROL</b>	Caja de derivación eléctricas

## HORIZON

Permette la **supervisione di una rete di macchine EUROCHILLER** (max. 10) come un unico sistema, ottimizzandone il funzionamento, **facendo interagire tutte le unità tra di loro in modo dinamico in funzione delle richieste dell'utenza e delle condizioni ambientali.**

Il sistema è predisposto per il monitoraggio remoto macchine ON-AIR.

It allows the **supervision of a network of EUROCHILLER machines** (max 10) as a single system, optimizing their operation, **letting all the units interact dynamically, according to the user's requirements and to the environmental conditions.**  
The system includes the ON-AIR monitoring control.



### SISTEMA DI SUPERVISIONE UNITÀ HORIZON

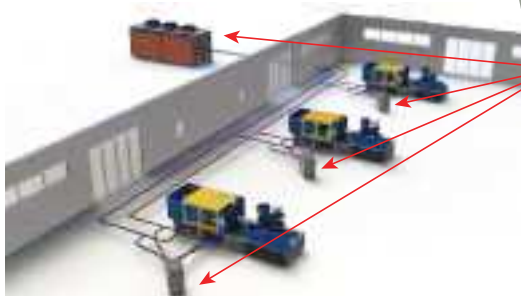
### HORIZON SYSTEM FOR UNITS SUPERVISION



## E-BRAIN control

Permette l'**ottimizzazione della temperatura dell'acqua di condensazione degli IceTemp** (max. 15) in funzione della temperatura ambiente e dei vari set-point impostati per l'acqua di processo, **regolando automaticamente il set-point di ADC/DC** (max. 5) per garantire la massima efficienza degli IceTemp-FC

It allows the **optimization of the condensing water of the IceTemp** (max. 15) according to the ambient temperature and the different set-points of the process water, **automatically adjusting the set-point of the ADC/DC** (max. 5) to grant the best efficiency of the IceTemp-FC.



### SISTEMA DI INTERFACCIAMENTO ICETEMP-FC CON ADC/DC

### SYSTEM FOR ICETEMP-FC AND ADC/DC INTERFACE

# REMOTE CONTROL and SYSTEM MONITORING

## EUROCHILLER ON-AIR

### SISTEMA DI CONTROLLO REMOTO ON-AIR

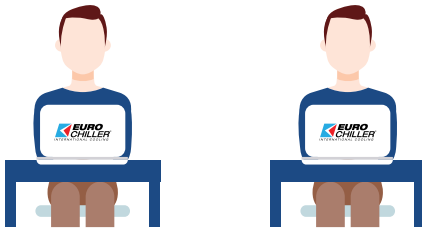
### ON-AIR REMOTE CONTROL SYSTEM



Sistema di monitoraggio remoto dei nostri sistemi di refrigerazione e termoregolazione, che permette:  
Remote control system of our cooling and temperature control units, allowing:



**SUPERVISIONE LOCALE:** Monitoraggio in loco a cura dell'utente finale.  
**LOCAL SUPERVISION:** On site monitoring by the end-user.



**MONITORAGGIO REMOTO:** Controllo in linea del funzionamento dell'unità e dei suoi parametri (a cura EUROCHILLER o centro assistenza autorizzato).

**REMOTE MONITORING:** On-line control of the operation of the unit and of its parameters (EUROCHILLER or authorized technical service).



**ASSISTENZA REMOTA:** Interazione con l'utente finale in caso di anomalie.  
**REMOTE ASSISTANCE:** Interaction with the end-user in case of malfunctions.



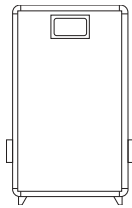
**INTERVENTO IMMEDIATO:** L'assistenza rileva in tempo reale la necessità di intervenire e può quindi reagire con immediatezza.

**PROMPT INTERVENTION:** The service is notified in real time when intervention is required and may react promptly.



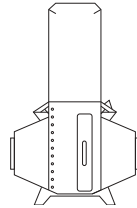
**REPORT TRIMESTRALI:** Report dettagliati delle condizioni di lavoro.  
**QUARTERLY REPORTS:** Detailed reports of operating conditions.

# PROCESS AIR CHILLERS & DEHUMIDIFIERS



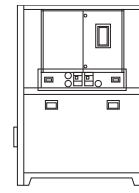
11-19 kW 1000-1500 m<sup>3</sup>/h

**MINI ABF**



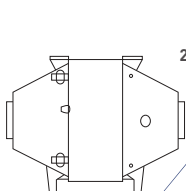
13-94 kW 1000-7500 m<sup>3</sup>/h

**AIR+**



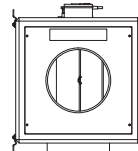
29-230 kW 2000-10000 m<sup>3</sup>/h

**ABFevo**



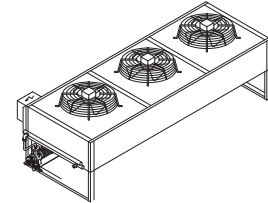
2-169 kW 250-17000 m<sup>3</sup>/h

**BRA+**



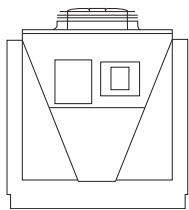
max. 20000 m<sup>3</sup>/h

**AMK**



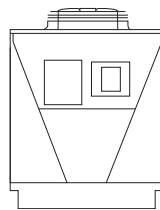
21-200 kW

**OFC KIT**



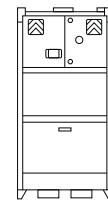
82-1220 kW

**ADcooler KIT**



63-920 kW

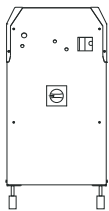
**Dcooler KIT**



400-3000 m<sup>3</sup>/h

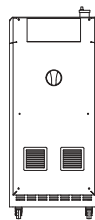
**EU-DRYmould**

# TEMPERATURE CONTROLL UNITS



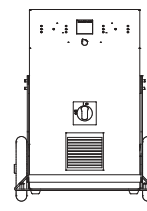
3 - 12 kW

**STARTY**



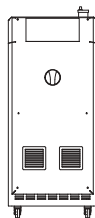
3 - 24 kW

**MAXY**



3 - 24 kW

**3FLOWSevo**



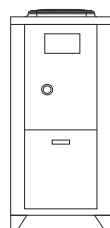
3 - 12 kW

**3FLEX**



3 - 150 kW

**ETO - ETW**



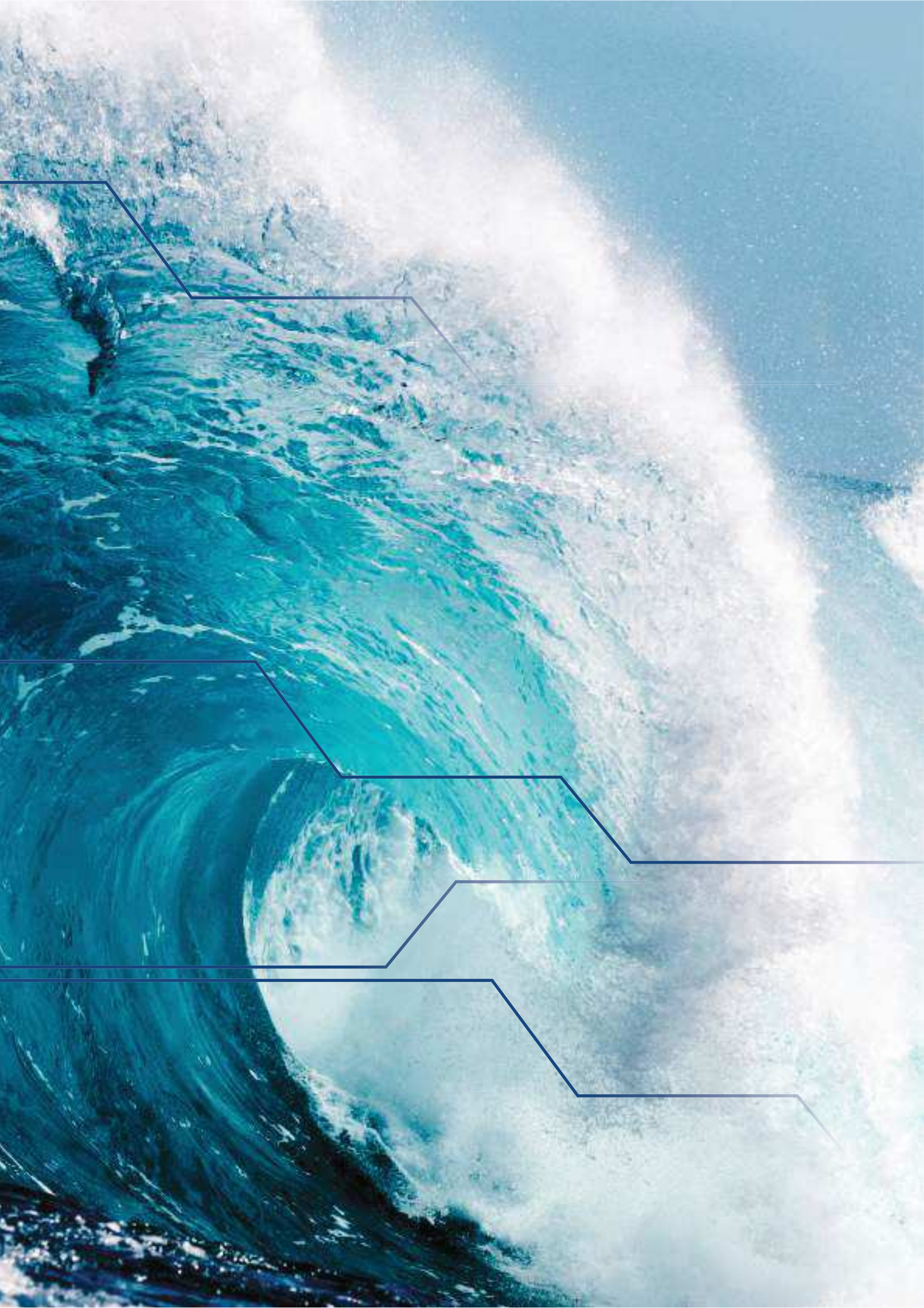
6 - 36 kW 13 - 130 kW

**ROSSOBLU**



3 - 18 kW 4 - 98 kW

**ICETEMP**





# PROCESS WATER CHILLERS

**PRODUCTS COLLECTION**  
2019 EDITION

EUROCHILLER S.r.l. - Via Milano, 69 - 27030 Castello d'Agogna - PV - Italy  
Tel. +39 0384.298985 - Fax +39 0384.298984 - Service +39 0384.298981  
enquiry@eurochiller.com - www.eurochiller.com

 **EUROCHILLERGROUP**